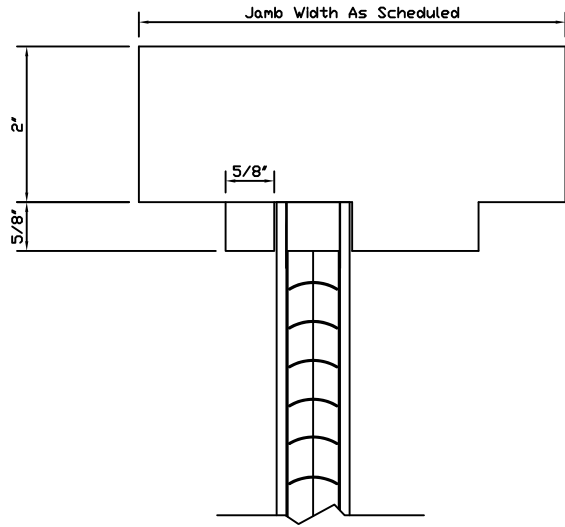
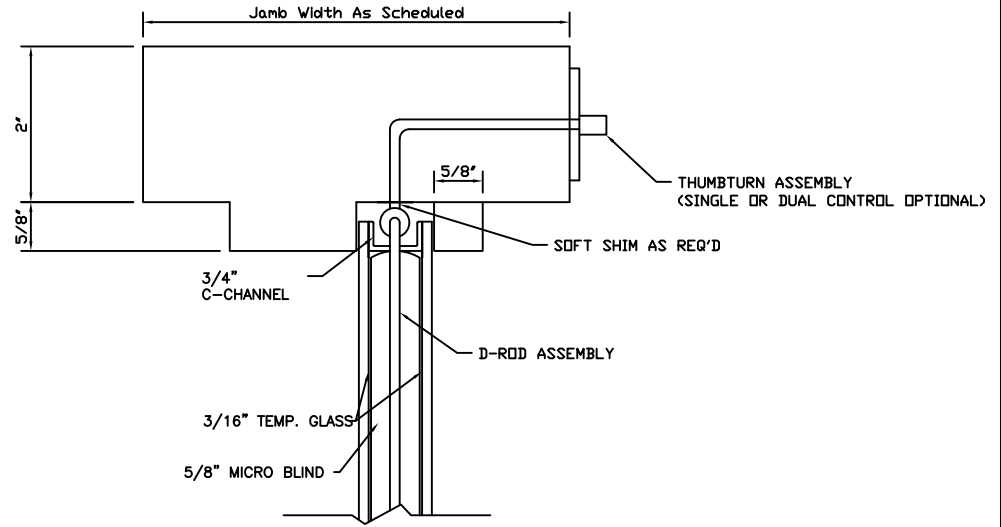


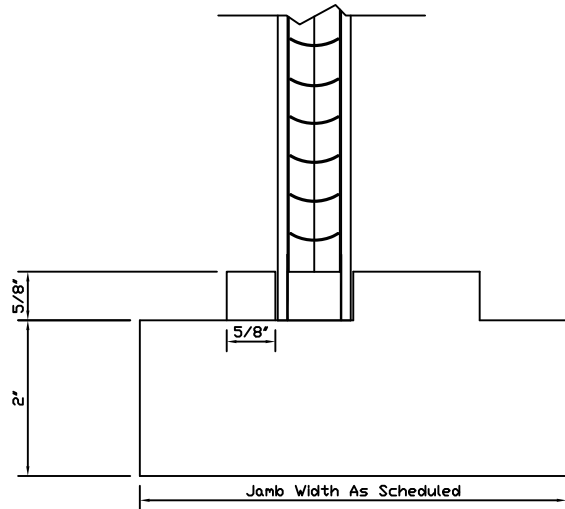
5



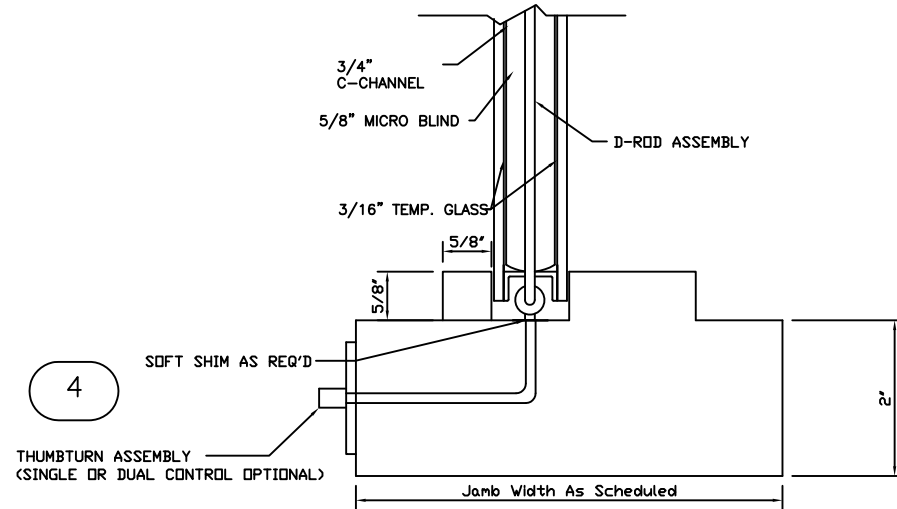
5



4



4



IE; BLIND HOLLOW METAL FRAME APPLICATION-SECTION

PARILUSE LLC ALL RIGHTS RESERVED

PATENT 2,465,968

©IE; BLINDS and RAL & Associates, Inc.

P.O. Box 442 • Ben Wheeler, TX 75754 • 866-267-1917

www.ieblinds.com

NOTES:

HOLLOW METAL FRAME PROVIDED BY OTHERS

SCALE: NONE

REVISION DATE: 5/16/14