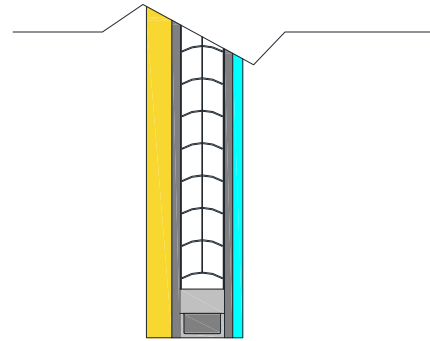


## IE; Blinds Lead Lined

### CLASSIFICATION



### PRODUCT FEATURES



#### Technical Specification

<b>Federal Specification</b>	<b>DD-G-451</b>
<b>Impact Safety Rating (Available upon request)</b>	<b>CPSC 16CFR1201-CAT II; ANSI Z97.1</b>
<b>Lead Lined Glass Thickness</b>	<b>5/16"</b>
<b>Overall Nominal Unit Thickness</b>	<b>1-3/16" to 2-1/4"</b>
<b>Thickness Tolerance</b>	<b>+/- .025</b>
<b>Lead Equivalence (in.; mm) Nominal</b>	<b>.078" (2.0mm)</b>
<b>Lbs.-Lead Equivalence /square foot</b>	<b>5.0</b>
<b>Wt.-Lbs. Glass/ square foot</b>	<b>8</b>
<b>Light Transmission</b>	<b>85%</b>
<b>Refractive Index</b>	<b>1.71</b>
<b>Higher Lead Equiv. (Available upon request)</b>	<b>2.4mm, 3.2mm, 3.7mm, etc.</b>
<b>Maximum size lead glass in single pane</b>	<b>48" x 96"</b>

#### Attention:

*This Glass is high optical quality LEAD GLASS and tends to tarnish or scratch more readily than ordinary window glass. Please note the following points:*

- A. X-Ray Lead glass is NOT tempered or fire-rated (Impact Resistant X-Ray Safety Glass is Available)
  - B. "Hairline" scratches are inherent in the manufacturing process of this glass.
  - C. X-Ray Safety Glass is NOT tempered, fire-rated, impact proof, shatter proof or scratch resistant.
1. Wipe off smudges on the lead glass with a dry cloth. Never use a wet rag.
  2. Wipe fingerprints off the lead glass immediately with a dry cloth.  
Perspiration and grease from finger prints left on the lead glass will cause permanent tarnishing.
  3. Smudges not removable by wiping with a dry cloth should be cleaned with alcohol or special cleanser and then wiped off with a dry cloth.